



Rushden and Higham Ferrers dial-a-bus service

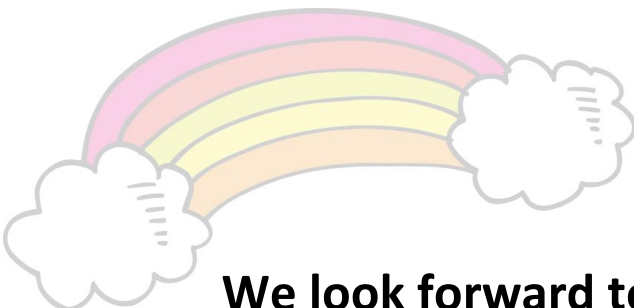
FREQUENTLY ASKED QUESTIONS

- Q. Which days does the Wellibus operate in Rushden and Higham Ferrers?**
A. Monday to Saturday excluding Bank Holidays and Bank Holiday weekends.
- Q. What time can I be picked up?**
A. Anytime from 9am for a £4 fare or from 9:30 free with a concessionary (older/disabled person) bus pass. Last pick up 2:30pm, last drop off (home) around 4:00pm.
- Q. Can I use the service if I haven't got a bus pass?**
A. Yes. Anyone can become a member (regardless of age or ability), book a pickup, and pay a £4 fare for each 1-way journey on the day.
- Q. My sister (a non-member) is staying with me. Can she use the bus?**
A. Yes. She can travel with you if you book a pickup for two people. She must pay a £4 fare (each way) on the day.
- Q. Can I book a trip to (say) Wellingborough or Raunds?**
A. Not at the moment. This service only operates within Rushden and Higham Ferrers.
- Q. What sort of destinations can I choose from?**
A. Any of the main Rushden and Higham supermarkets and both town centres, Rushden Lakes, Splash, Pemberton Centre, Nene Park Medical Centre, etc. Please call us to check.
- Q. How long will I get to do my shopping at (say) Asda?**
A. Approximately 90 minutes, longer if you wait for the next round trip. Always check with the driver regarding pickup times. If you finish shopping early, we recommend you enjoy a relaxing cuppa in the café!

Call 01933 223636 to join NOW!

***** PLEASE NOTE *****

Membership payments must be made at the time of joining, over the phone or in person.



We look forward to seeing you very soon!!